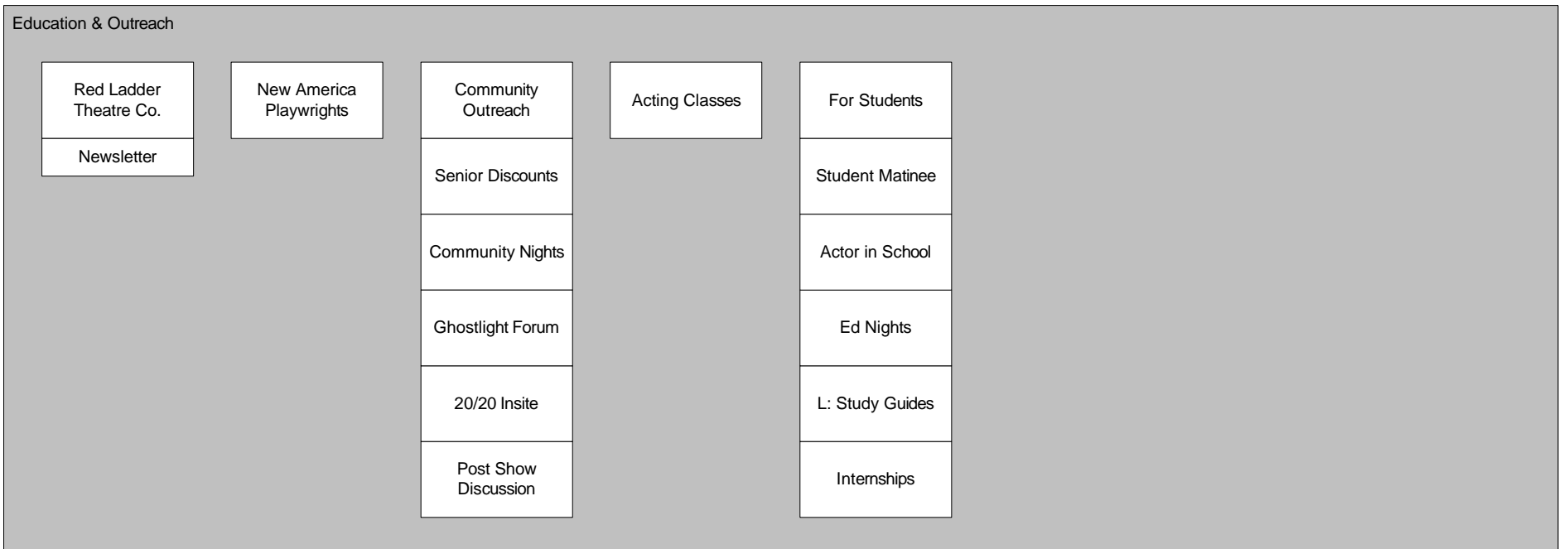
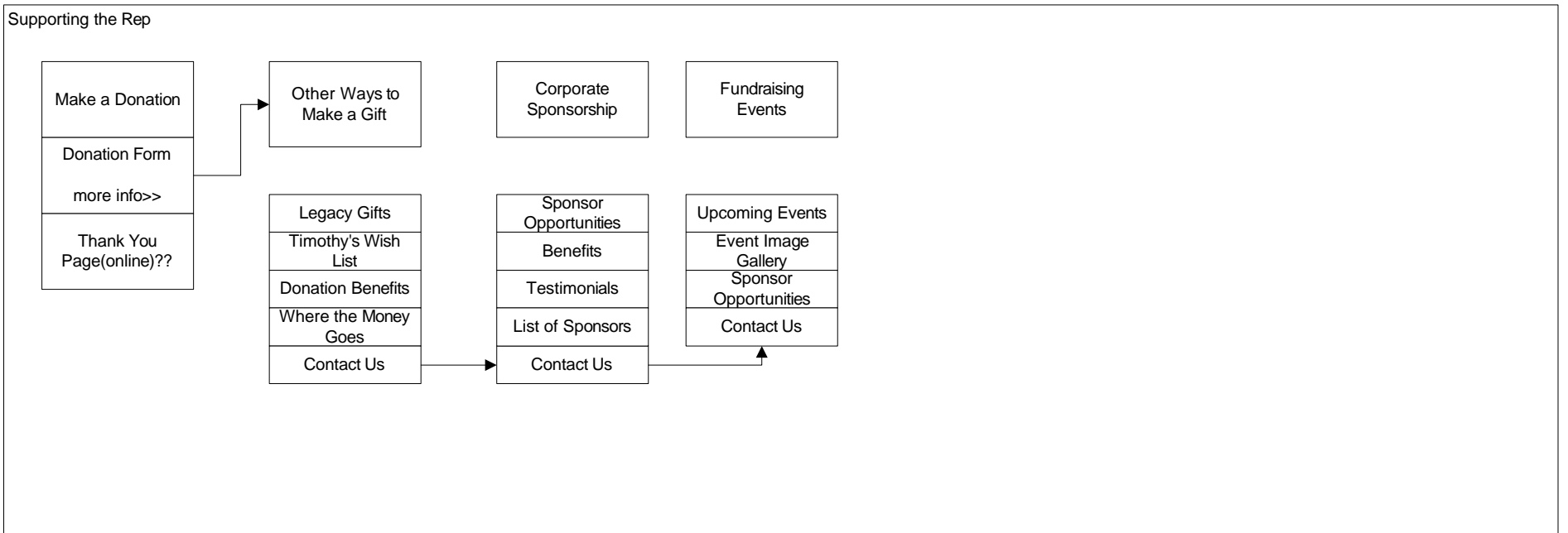
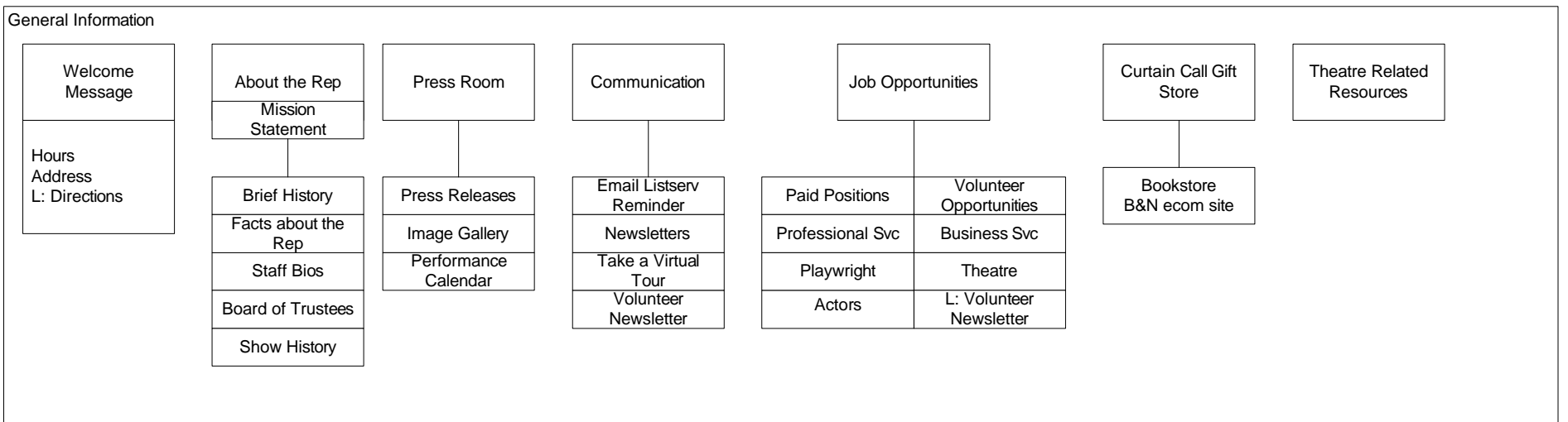
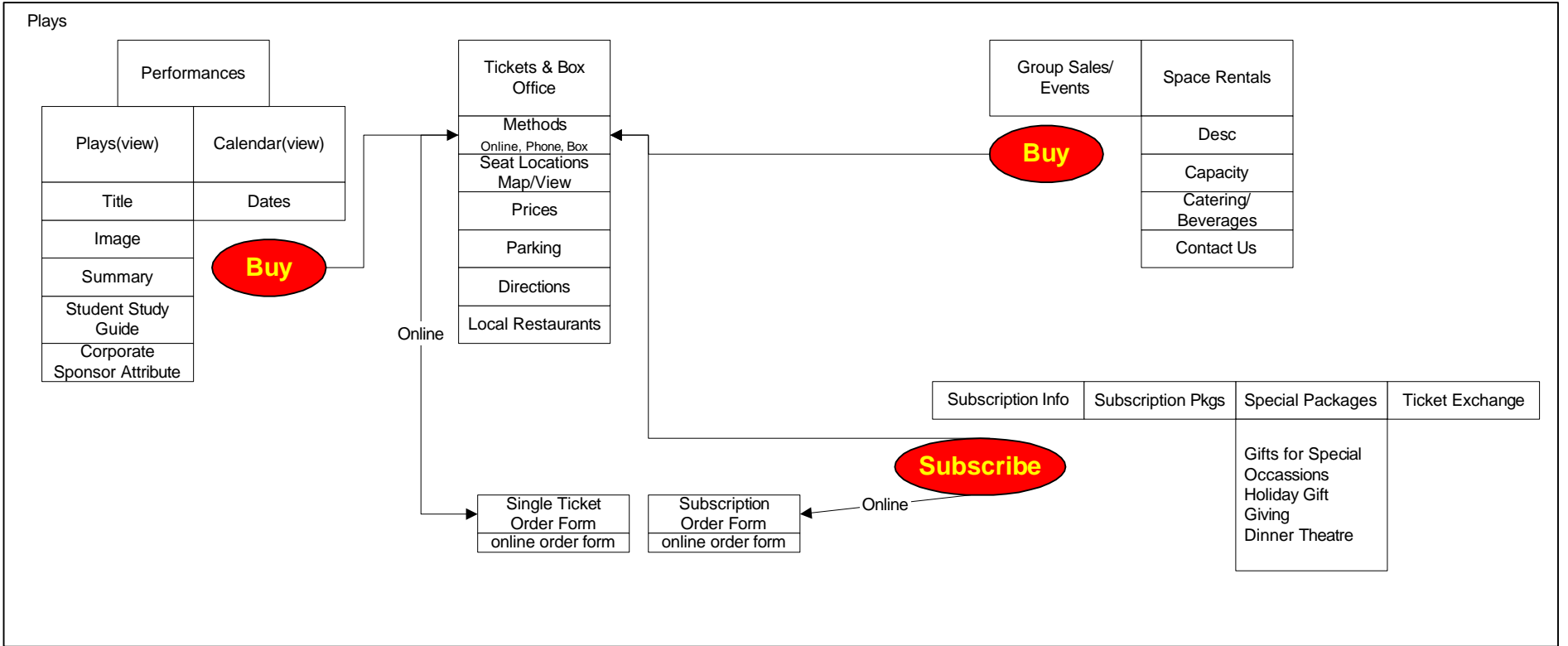


Future Sitemap - SJ Rep

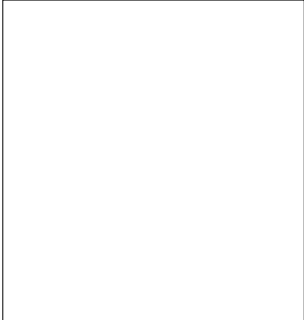
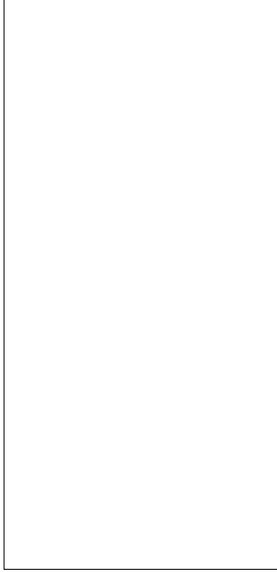
Home
 Sell tickets!!!!
 Subscription
 Newsletter Subscription
 Site Survey

Specials:
<http://www.sjrep.com/special.html>



navigation

Performances for the 2001-2002 Season



Currently Playing
<Title>
<Dates>
<Principles>

Text goes here.

Buy Now

Student Study Guide

Performance Sponsored by: XYZ Corporation



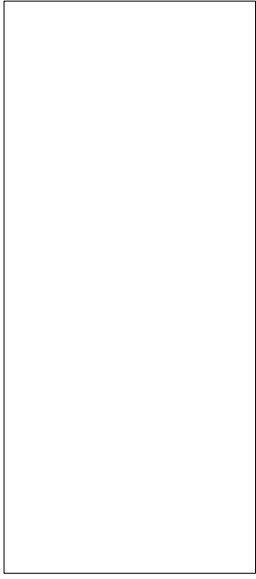
<Title>
<Dates>
<Principles>

<Title>
<Dates>
<Principles>

<Title>
<Dates>
<Principles>

Global Footer

navigation



Performances for the 2001-2002 Season

[Calendar View](#) | [Performances View](#)

<Month>

month with any sold out dates

[<<Previous Month](#)

[Next Month >>](#)

Global Footer

navigation

How to Purchase Tickets

ON-LINE: [Order Season Tickets using our secure online form.](#)

BY PHONE: (408) 367-7255

BY MAIL: Rep Box Office, 101 Paseo de San Antonio, San Jose, CA 95113

BY FAX: (408) 367-7236

IN PERSON: Rep Box Office: 101 Paseo de San Antonio, San Jose. Between South 2nd & 3rd Streets.

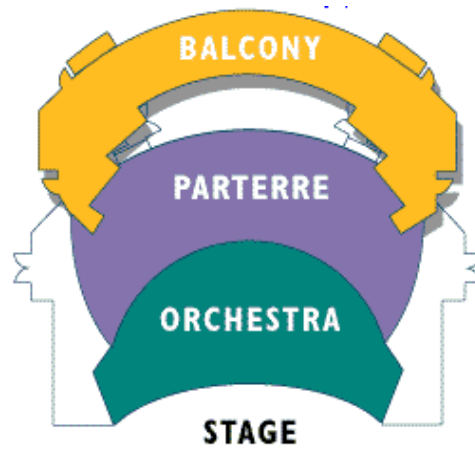
Ticket Office Hours
During the run of a show at the Rep box office

Monday 10AM-6PM,
Tuesday-Friday 10AM-8PM,
Saturday 1PM-8PM,
Sunday 1PM-7PM

Between Shows:
Monday-Friday 10AM-6PM, Closed Saturday & Sunday
Opens 1 hour prior to curtain time.

Subscribe
Logo

Seat Locations



Balcony -
Parterre -
Orchestra -

[See where your seats are located.](#)

[Photo view from each area.](#)

Partner
Logo

Global Footer

navigation

Purchase Single Tickets Online

Page 1 of 3 Customer Information

Use this secure online form to order tickets to one (1) show. Visa, MasterCard, Discover or American Express Card are welcomed.

* Required field for online orders.

* Name: example: *John Smith*

* Address:

* City:

State:

* ZIP:

* Day Phone:

Evening Phone:

* Email Address: [Email Usage and Privacy Notice](#)

Please send me more information about upcoming performances and events.

Add me to the San Jose Rep e-Newsletter list.

I would like more information about making donations to the Rep.

Cancel

Next >

Global Footer

navigation

Purchase Single Tickets Online

Page 2 of 3 Performance Selection

1) Select the Play

Amy's View

[More information for Show Descriptions.](#)

2) Select the Date and Time

Performance Day and Time: Select Performance Day/Time

Performance Date: example: 01/23/01

3) Select the Seat

- Orchestra
- Parterre
- Balcony

4) Number of Tickets:

2

Disclaimer needed in case tickets may not be available.

5) Contributions

\$

6) Approximate Total:

\$

Day & Time	Orchestra	Parterre	Balcony
Friday, 8PM	\$37.00	\$32.00	\$27.00
Saturday, 8PM			
Wednesday, 8PM	\$32.00	\$27.00	\$22.00
Thursday, 8PM			
Saturday, 8PM			
Sunday 2PM & 7PM			
Preview Wednesday, 8PM	\$27.00	\$22.00	\$17.00
Preview Thursday, 8PM			
Preview Sunday, 2PM & 7PM			
Tuesday, 8PM			
Wednesday, Noon			

A \$2 per ticket processing charge will be added on all single ticket phone, mail, and fax orders. Maximum charge \$10.

Seat Locations

Balcony -
Parterre -
Orchestra -

[See where your seats are located.](#) Partner Logo

[Photo view from each area.](#)

Cancel

Next >

Global Footer

navigation

Purchase Single Tickets Online

Page 3 of 3 Payment

1) Select Card Type:

VISA

2) Card Numer:

Performance Day and Time:

Expiration Date: example: 10/01

3) Card Holder's Name:

4) Special Discounts:

- Student Pricing Discount
- Senior Pricing Discount
- Subscriber Pricing Discount

Discounts

Student: Seats may be purchased by a full time student with I.D. for 1/2 price.

Student Matinee: Wednesday matinee performances. Offer free of charge are study guildes & post-play discussions.

Seniors: \$3 off the single ticket prices.

Subscriber: \$3 off the single ticket prices.

5) Special Needs:

I require Wheelchair/Handicap access.

Please list any special requests or accomodations to be made at the time of your seating:

Cancel

Submit

Global Footer

Thank you email should be sent to the customer to verify how much was charged and details about the seating. This email would be also great for mmore cross-promotional information as well as suggestions for local dining/parking/directions information.

navigation

Purchase Subscription Online

purchase form

Ticket Prices

Locations

Global Footer

navigation

EDIT COPY

Subscription Information

THE BEST SEATS

Subscribers always get the best seats and also get to own those seats for the entire season.

12% SAVINGS

Season Subscribers save up to 12% off the regular single ticket price. Seniors save up to 36% and Students save 50%!

CAN'T MAKE YOUR PERFORMANCE?

Exchange Your Tickets! Only subscribers may exchange their tickets for another performance of the same show. Exchange up to one-hour prior to curtain time. It's convenient in person, by phone, by mail, or fax them to us.

[More details>>](#)

IT'S EASY TO SUBSCRIBE. Subscribe by phone, fax, mail or on-line.

POST-PLAY DISCUSSION. Most actors, directors, designers or other interesting theatre professionals at a free post-play discussion held each Saturday, Sunday and Wednesday matinee.

DISCOUNTS ON EXTRA TICKETS. Order extra tickets for family and friends and save \$3 off the full single ticket price.

LOST YOUR TICKETS? Subscribers get their tickets replaced absolutely FREE!

STAY INFORMED. Subscribers receive The Rep, the official newsletter of the San Jose Repertory Theatre. It is full of interesting information to prepare you for an exciting evening at the theatre.

FREE PARKING. Subscribers park in several clean, well-lighted, convenient public parking lots.

FREE GIFT!

Free Dining Gift Certificate – A \$120 value. Subscribe now and receive a dining gift certificate, which entitles the subscriber to a credit of \$10 towards the purchase of food and beverages at each of the downtown participating restaurants.

Subscribe Now

Global Footer

Subscribe
Logo

EDIT COPY

Season Ticket Packages

Six-Play Prices. Experience all six exciting and dynamic shows!
For those who want it all - you won't miss a single moment.

[Buy Now](#)

Day & Time	Orchestra	Parterre	Balcony
Friday, 8PM Saturday, 8PM	\$215.00	\$185.00	\$155.00
Wednesday, 8PM Thursday, 8PM Saturday, 3PM Sunday, 2PM & 7PM	\$155.00	\$125.00	\$95.00
Preview Wednesday, 8PM Preview Thursday, 8PM Preview Sunday, 2PM & 7PM Tuesday, 8PM Wednesday, Noon	\$185.00	\$155.00	\$125.00

Seniors --Take \$30 off listed price. Students -- take half off

Five/Four Play Prices. Choose any five or four shows you want to see. With this series you don't need to buy the whole season. You simply choose the shows you want to see.

[Buy Now](#)

Day & Time	Orchestra	Parterre	Balcony
Friday, 8PM Saturday, 8PM	\$155/\$125	\$130/\$105	\$105/\$85
Wednesday, 8PM Thursday, 8PM Saturday, 8PM Sunday 2PM & 7PM	\$130/\$105	\$105/\$85	\$80/\$65
Preview Wednesday, 8PM Preview Thursday, 8PM Preview Sunday, 2PM & 7PM Tuesday, 8PM Wednesday, Noon	\$180/\$145	\$155/\$125	\$130/105

Passports. Six Admission Certificates. Can't make up your mind? The Rep Passport give you 6 admission certificates redeemable for tickets to any mainstage show. Use the passport anyway you like. Two certificates to three plays, six certificates to one play, or any other combination.

[Buy Now](#)

	Passport I	Passport II
Six Admission Certificates	Good Sun--Thurs & Mat	Good anytime
Price	\$155.00	\$185.00
Senior Price	\$125.00	\$155.00

Subscribe
Logo

Special Subscription Packages

FAMILY SUBSCRIPTIONS. The Creative Playshop.

Developed for kids ages 6 to 12, this fun, educational, creative dramatic workshop will explore the imagination through interactive theatre activities. Playshops are held at the Rep theatre during the first, second and third Saturday (3pm) matinee of each show.

Rep theatre professionals lead the Playshop in the upstairs rehearsal hall. Perfect for parents in conjunction with a Saturday (3pm) matinee subscription, just drop the kids off before the show, enjoy the performance and pick them up afterwards.

Creative Playshop Subscription

# of Workshops	Six	Five	Four
Price	\$92.50	\$77.50	\$62.50

Developed for kids ages 6 to 12. Playshops are held at the Rep theatre during the 1st, 2nd and 3rd Saturday Matinee (3pm) of each show. Kids experience workshops taught by theatre professionals. Perfect for parents in conjunction with a Saturday Matinee (3pm) Subscription.

Subscribe
Logo

MIRASSOU WINE & THEATRE SERIES.

What better way to learn about wine, meet new people and experience entertaining theatre than at the Mirassou Wine & Theatre Series. Savor outstanding wine prior to selected Friday night performances throughout the season. Each Mirassou Wine & Theatre Series subscription package includes guaranteed seats to six Friday evening shows and wine tasting at two of the shows by one of the Bay Area's premiere wineries, Mirassou.

Wine Tasting 6:15-7:15 pm. Show at 8:00 pm.
Prices: Orchestra-\$235.00, Parterre-\$205.00, Balcony-\$175.00.

20/20 INSITE, WEDNESDAYS.

What if you could get all the insight, behind-the-scenes details and backstage buzz of a Rep production before you saw the play? Join Associate Artistic Director, John McCluggage for 20/20 Insite, a series of informative talks Wednesday evenings before your scheduled performances. Find out what to watch for in that evening's production: what makes Rep performances different from other theatres' interpretations or gain valuable insight into new works and Rep premieres. Here's how it works: 2 Wednesday evenings throughout the season, you are invited to join John and perhaps a surprise guest or two in the upstairs balcony at the theatre from 7-7:20 PM for an informal discussion. Then browse Curtain Call, the Rep gift shop, or enjoy a refreshment in our lobby before you see the show. Best of all...it's free. But space is limited to the first 60 people.

Just call the Rep box office at 408-367-7255 to RSVP by Sept 9, 2000 and we'll give you all the details, including your dates.

SENIORS.

Seniors enjoy the Rep anytime and take \$30 off the price of a six-play subscription. Join us for our Senior Sunday performances and experience an enlightening free post-play discussion with actors immediately after the Sunday matinee.

PREVIEWS.

Our previews are specially discounted to make theatre affordable. It's the same quality professional theatre at a special price.

STUDENTS

Students get 1/2 off the already discounted subscription price. This discount is good for any performance, any available seat – anytime. Special student Wednesday matinee packages available too!

CORPORATE PARTNER PROGRAM

Whether it is entertaining clients or rewarding that special employee, the Rep will specially tailor a ticket package to fit your corporate need.

<contact information for special packages>

navigation

EDIT COPY

Ticket Exchange Information

Only Subscribers may exchange tickets

Just turn in your tickets at least one hour before the performance date/time marked on your tickets and we will gladly exchange them for another performance of the same play.

EXCHANGE FEES: There will be no exchange fee for switching into a performance of equivalent ticket value. Subscribers changing from a lower priced seat/performance time to a higher priced seat/performance time are charged a nominal upgrade fee. (Please refer to the ticket exchange price list below.) When changing to a lower priced seat/performance refunds are not available.

TO EXCHANGE IN PERSON: Bring your tickets to the Rep Box Office, 101 Paseo de San Antonio, San Jose.

<will we need to tell them the hours the box office is open>

TO EXCHANGE BY MAIL: Use the Rep's convenient subscriber exchange envelope that came in your subscriber ticket packet. Mail ticket-to-be-exchanged with a check or charge number (if an exchange fee is required). Select at least one alternate date. Allow ample time for mail delivery. If you would like your tickets mailed back to you, include a self-addressed stamped envelope; otherwise, your tickets will be held at the box office window on your performance date. Always include a phone number with your exchange.

<contact info if they don't have the exchange envelope>

TO EXCHANGE BY FAX: Cut your tickets in half lengthwise and make a photocopy of the severed tickets. On the photocopy, write your name, phone number and alternate dates in order of preference, then fax the photocopy to the Rep at (408) 367-7236.

Subscribe
Logo

Global Footer

navigation

Directions

San Jose Repertory Theatre
101 Paseo de San Antonio | San Jose, CA 95113-2603
tickets: 408.367.7255 | office: 408.367.7266 | fax:
408.367.7237

From San Francisco, 101 South

Take 101 South to 880 South
Exit at Coleman Ave., turn left, go South towards downtown San Jose.
Coleman Ave. turns into Market Street. Follow Market to San Fernando.
Turn left on San Fernando Street. Go to Second Street.
Turn right on Second Street. The Theatre (blue building) will be on left in the middle of the block.
Follow to downtown parking.

From Oakland, 880 South

Exit at Coleman Ave., turn left, go South towards downtown San Jose.
Coleman Ave. turns into Market Street. Follow Market to San Fernando.
Turn left on San Fernando Street. Go to Second Street.
Turn right on Second Street. The Theatre (blue building) will be on left in the middle of the block.
Follow to downtown parking.

From South of San Jose, 101 North

Follow to 280 North.
Exit on Guadalupe Pkwy 87 North,
Exit Santa Clara Street.
Turn right onto Santa Clara St. Go to Market Street.
Turn right on Market Street. Follow Market to San Fernando.
Turn left on San Fernando Street. Go to Second Street.
Turn right on Second Street. The Theatre (blue building) will be on left in the middle of the block.
Follow to downtown parking.

From San Francisco, 280 South

Exit on Bird Avenue. Turn left on Bird.
Go to San Carlos Street. Turn right on San Carlos.
Follow San Carlos to Third Street.
Turn left on Third Street.
The theatre (blue building) is in the middle of the block on left.
Follow to downtown parking.

From Livermore or 680 South

Follow to 280 North.
Exit on Guadalupe Pkwy 87 North,
Exit Santa Clara Street. Turn right onto Santa Clara St.
Go to Market Street.
Turn right on Market Street. Follow Market to San Fernando.
Turn left on San Fernando Street. Go to Second Street.
Turn right on Second Street. The Theatre (blue building) will be on left in the middle of the block.
Follow to downtown parking.

From Santa Cruz Mountains

Take Highway 17 North to 280 South exit.
Take 280 South and exit on Bird Avenue. Turn left on Bird.
Go to San Carlos Street. Turn right on San Carlos.
Follow San Carlos to Third Street. Turn left on Third Street.
The theatre (blue building) is in the middle of the block on left.
Follow to downtown parking.

Public Transportation Directions

Light Rail

The southbound Paseo de San Antonio stop (Santa Teresa line) is directly opposite the theatre; from the northbound stop, walk 1 block east along the Paseo - the theatre is between Second & Third.

Bus (VTA)

Lines 23, 24, 66, 68, 82, 85 & 304 all stop north and southbound at Paseo de San Antonio. Lines 11, 63, 65, 72, 73 & 81 stop at San Fernando & Second on the far side of the parking lot adjacent to the theatre. From other lines, including 22, 64, 180 & 300, get off at Santa Clara & Second and walk 1.5 blocks south on Second - the theatre is on your left.

Check Yahoo! Maps & Driving Directions: <http://maps.yahoo.com/py/maps.py>

Global Footer

navigation

EDIT COPY

Suggestion for Local Restaurant & Hotel

The Rep is proud to support several downtown restaurants.

EULIPIA. Start your evening at Eulipia, San Jose Repertory Theatre's host restaurant for the past 20 years. Eulipia, just around the corner from the theatre, serves the finest California cuisine. Features casual atmosphere and friendly prices. For a quick lunch, a leisurely dinner or a late drink, Eulipia is THE place to go. Support the Rep by purchasing Eulipia dining certificates.
Eulipia, 374 S. First St., San Jose (408) 280-6161
<http://www.eulipia.com>

SAN JOSE HILTON & TOWERS. In the heart of the Downtown Center, this 17-story hotel offers 355 guest rooms, including 15 luxurious corner suites and 2 VIP Tower floors. Guest can relax by the pool and spa or work out in the Fitness Center. The lobby features the City Bar & Grill.
Support the Rep by purchasing a Hilton/Rep Weekend Getaway Package:

Package I

Overnight weekend accommodation for two (Friday or Saturday).

Free parking at the Hilton.

Two tickets to a weekend show at San Jose Repertory Theatre (tickets subject to availability).

Price: \$120 with Theatre tickets, \$89 without Theatre tickets.

Package II

Overnight weekend accommodation for two on Saturday.

Free parking at the Hilton.

Two tickets to a weekend show at San Jose Repertory Theatre (tickets subject to availability).

Sunday Brunch for Two at the City Bar & Grill.

Price: \$160 with Theatre tickets, \$129 without Theatre tickets.

(Weekend rate \$89, Brunch \$40, Rep Tickets \$31, includes tax, excludes gratuity.)

All Weekend Getaway packages are purchased through the San Jose Hilton & Towers, 300 Almaden Blvd, San Jose, 408/287-2100.

For more information about downtown, check out SanJose.Org - www.sanjose.org

Global Footer

Group Sales & Events

Corporate Partner Discount Ticket Program

Set up a custom method for your corporate staff to have access to discount tickets through the workplace.

An entertaining time at the Rep is the perfect way to get together with friends or have a special night out with your club members or co-workers. Let the Rep do it all for you. You get great entertainment from your professional theatre company. Need dinner reservations? Pre or post-show cocktail party? Tell us what you need and we will make your evening a smashing success.

Bring a group of 12 or more and save \$3 to \$5 per ticket. Call today, 408-367-7262.

Experience the best shows in town -- order you tickets now!

Employee Discount Ticket Package

Our Community Events Coordinator, Everett Kramer, will work with your Human Resources or Employee Benefits departments to develop a custom method for your corporate staff to have access to discount tickets through the workplace. Using extant information distribution systems such as E-Mail and newsletters or even on-site thematic presentations, The Rep will create the easiest method of getting your employees to take advantage of this exciting workplace perk! Also, ask about hosting your special event at our space.

Season Tickets

You save \$17.00 to \$23.00 off of regular ticket prices. Six, Five, Four and Three-Play Packages available. Subscriber benefits such as free exchanges, subscriber periodicals, special event priority tickets and you get to sit in the same seats for every show!

Secure a years worth of pre-planned entertainment in one step. Pay yourself before your bills!

Single Tickets

Your staff can order tickets directly from The Rep via Phone (408-367-7255), FAX (408-3677-7236), E-Mail, or mail. Just by mentioning your Company name your employees will receive one of the discounts listed below! Half-Price tickets for preview week for Corporations who have made a donation of \$5000.00 or more. \$3 Discount off any ticket, any show, any time! \$7 Discount off tickets for groups of 12 or more. Special incentive discounts -- including two-for-one tickets to selected performances.

Bonuses for program contacts or coordinators and exciting contests for your staff, including:

Rewards for multiple sales, such as complementary tickets or free dinners!
Dinner reservation services and Backstage Tours for employee nights at the Rep!
Tickets for "Employee of the Month" or similar recognition programs

Did you know ...

Over 100,000 patrons attended Rep shows and events last year.
Over 200 performances were presented last season by the Rep.
Over 80% of Rep patrons dine at a local restaurant before or after the show.
Over 70% of our patrons are professionals age 35-64 who regularly support the arts.
Over 80% have household incomes of over \$65,000.

Step into the spotlight with other prestigious businesses and corporations by placing an ad. Call Everett Kramer 408-367-7262 or Butch Coyne at 408-367-7290.

navigation

EDIT COPY

Space Rental

Space Descriptions
Catering/Beverages

Curtain Call Gift Store

Online Bookstore

Space and Event Rentals

The Rep opens up its doors for a wide range of outside events for various groups and organizations. Find out more how you can take advantage of this stunning structure for your events, [e-mail us](#).

<who is the contact person, make a bit more formal>

Special Event Rental Information

One of the most exciting aspects of our new theatre is the numerous spaces that can now be offered to the public for a number of different formats...from a large gala reception following one of our shows to a small private meeting in our VIP lounge.

San Jose Repertory Theatre has the ability to customize spaces for your event needs.

Listed are descriptions of the spaces available as well as information about our preferred caterers.

For more information or to inquire about a rental, please contact Everett Kramer in San Jose Repertory Theatre's Rental Office at: 408-367-7262

Global Footer

EDIT COPY

Space Rental
Space Descriptions
Catering/Beverages

Curtain Call Gift Store

Online Bookstore

Space Rental Descriptions

Sobrato Auditorium

This plush, state-of-the-art theatre is the utmost in comfort and high-end theatrical technology. The Theatre combines three seating sections: Orchestra, Parterre and Balcony with a world-class stage to create a fantastic place to gather the members of your group for a presentation, lecture, class or show. The stage itself is available on a limited basis for dinner events.

Dressing rooms may be available upon request.
Capacity: 517-570 theatre style seating
100 Sit down on the stage, 250 Reception on the stage

Lower Lobby

Large glass walls and a modern style distinguish our main lobby. Its sweeping architecture and open airy feel will create a golden atmosphere during San Jose's sunny days. At night the glow from our sumptuous lighting will welcome your guests to your event. Perfect for pre- or post-show receptions as well as private dinners during non-show nights.

Capacity- 100 sit down, 200 reception

Upper Lobby

Open, bright and airy describe our upper lobby with two outdoor balcony areas and its own bar and restrooms.

Create that magical pre-show dinner for your small group, as you watch others arrive to enjoy the performance.

Combine this with the lower lobby to extend the size of your event!

Capacity- 20-30 sit down, 50-75 reception

The SJ Mercury News Lounge

Our luxurious private lounge may be rented for a private meeting, an intimate dinner or even a secluded reception. With a large window and balcony, the elegance of this room will add the perfect touch for your events.

Capacity- 30 sit down, 45 reception

Fairmont Rooftop Terrace

Enjoy the beauty of San Jose's amazing climate as you wine and dine under the sun, moon and stars on the luxurious

Fairmont Rooftop Terrace. Perfect for a preshow dinner or reception or just a fantastic location for your memorable event.

Capacity- 200 sit down, 250 reception

Studio Theatre

Adjacent to the Fairmont Terrace, this majestic studio is easily converted for your special event needs. High ceilings, large windows and a decidedly theatrical atmosphere make this a great location for either an indoor dinner or reception.

For larger groups, you may combine this space with the Fairmont Terrace for a lovely indoor-outdoor event.

Capacity- 100 sit down, 150 reception

Paseo Courtyard

Passing directly in front of The Rep, San Jose's Paseo de San Antonio is a wide corridor through the bustling downtown. Spreading to include a courtyard adjacent to our main lobby, the Paseo is ideal for large events that benefit from an outdoor environment.

Have your event under the glorious San Jose sun or ask us to arrange for shade with a tent!

Capacity- 50-100 Sit down, 300-525 Reception

navigation

EDIT COPY

Space Rental
Space Descriptions
Catering/Beverages

Curtain Call Gift Store

Online Bookstore

Catering and Beverages Information

Catering

Below is a list of caterers who are qualified to service events in our facility. If you wish to utilize a caterer who is not shown below, please contact the rental office to discuss the details.

For more information or to inquire about a rental, please contact Everett Kramer in San Jose Repertory Theatre's Rental Office at: 408-367-7262

A Catered Affair Kelly Bromiley 408- 727-6480

Coast Catering Ginger Kramer 408-732-7300

Catered Too Greg Cassella 408- 295-1563

Eulipia Restaurant Steve Borkenhagen 408- 280-6161

Fairmont Hotel George Patten 408- 998-3909

Massimo's Catering Terri Ferraro 415- 585 -8315

Paolo's Aysel Sorensen 408- 294-2558

Parsley Sage Rosemary & Thyme Debbie Blackwell 800 798 8388

Rue De Paris Linda Hulberg 408- 298-0704

Beverage Service

As the holder of the wine and beer license for the building, San Jose Repertory Theatre must provide all alcoholic beverage services for your events.

For Beverage Service, please Contact Ruth Mikusko, Systems & Office Manager @ 408-367-7285.

For Group Rates/Parties call Everett Kramer in San Jose Repertory Theatre's Rental Office at: 408-367-7262 for service and estimates.

Global Footer

navigation

Directions
Hours
About the Rep
Press Room
Communicaion
Job Opportunities

General Information

Timothy Lear Photo

Tim Lear's Blurb

EDIT COPY

Global Footer

navigation

Directions

About the Rep

Brief History
Facts about the Rep
Staff Bios
Board of Trustees
Show History

Press Room

Email & Newsletter

Job Opportunities

About the Rep

Mission Statement

As a professional theatre serving San Jose and the surrounding Santa Clara Valley, San Jose Repertory Theatre exists to:

- produce seasons of exciting, challenging, entertaining and evocative plays selected from classical and contemporary periods;
- provide a creative environment for theater artists and offer opportunities for innovative approaches to existing work and the development of new work;
- to reflect and enhance the community;
- present to the community the work of other professional and professionally oriented performing artists not normally included in the Rep's main season;
- and to contribute on a national level to the essential growth and development of live theatre in the United States.

San Jose Rep is the only fully professional regional theatre in the South Bay, and annually presents six mainstage shows and has an extensive community outreach program.

The Rep is a member of the Theatre Communications Group, the League of Resident Theatres, Theatre Bay Area and the San Jose Arts Roundtable. It operates under an agreement between the League of Resident Theatres and Actors Equity Association, the union of professional actors and stage managers in the United States, and under an agreement with the Society of Stage Directors and Choreographers, an independent national labor union and United Scenic Artists.

Global Footer

navigation

EDIT COPY

Directions

About the Rep

Brief History

Facts about the Rep

Staff Bios

Board of Trustees

Show History

Press Room

Email & Newsletter

Job Opportunities

Brief History

Formerly San Jose Repertory Company, the theater was founded in 1980 by Santa Clara County resident James Reber. With assistance from the San Jose Fine Arts Commission, the company produced its first season at the 537-seat Montgomery Theater in 1981. Shortly thereafter, the subscription base skyrocketed, making it one of the fastest growing theatres in the United States.

With Berkeley Repertory Theatre and Eureka Theatre, in 1986, the Rep produced Emily Mann's EXECUTION OF JUSTICE, and burst into the national spotlight when the production was featured on the cover of American Theatre Magazine.

Timothy Near joins The Rep

In 1987, the company gained a new artistic director, Timothy Near. Her first season included Arthur Miller's ALL MY SONS, which was named "Best Production in the Bay Area" by San Jose Mercury News.

A long string of artistic and critical successes followed including: FIRE IN THE RAIN...SINGER IN THE STORM - a world premiere commissioned by the Rep which went on to successful runs in Los Angeles, San Francisco and off-Broadway in New York (1991); COLE! - a musical revue which won six Bay Area Drama-Logue Awards, eleven Bay Area Theatre Critics Circle nominations and played in San Francisco and Los Angeles (1992) and 1940'S RADIO HOUR, which won three Bay Area Theatre Critics Circle Awards (1988) and was brought back by popular demand in 1991 and 1994.

Other critically acclaimed productions include THUNDER KNOCKING ON THE DOOR (1997) which won nine Bay Area Drama-Logue Awards, OLD WICKED SONGS by John Marans, winner of three Bay Area Theatre Critics Awards (1997), the world premiere of SISTERS MATSUMOTO (1999) by Philip Kan Gotanda and the American premiere of LOVE IN THE TITLE (2000) by Hugh Leonard, an international collaboration with Ireland's Abbey Theatre.

New State-of-the-Art Theatre

In November 1997 the Rep opened its stunning new theater facility at 101 Paseo de San Antonio. The Redevelopment Agency of the City of San Jose and the Rep formed a partnership to bring this dream to reality. Its dramatic architectural design and intimate 540 seat auditorium allows for excellent acoustics and sight lines for theatregoers. The new facility is the permanent home of San Jose Repertory Theatre - allowing the company to expand its artistic vision and scope.

More details about [Show History](#) at the Rep

Global Footer

navigation

EDIT COPY

Directions

- About the Rep
- Brief History
- Facts about the Rep**
- Staff Bios
- Board of Trustees
- Show History
- Press Room
- Email & Newsletter
- Job Opportunities

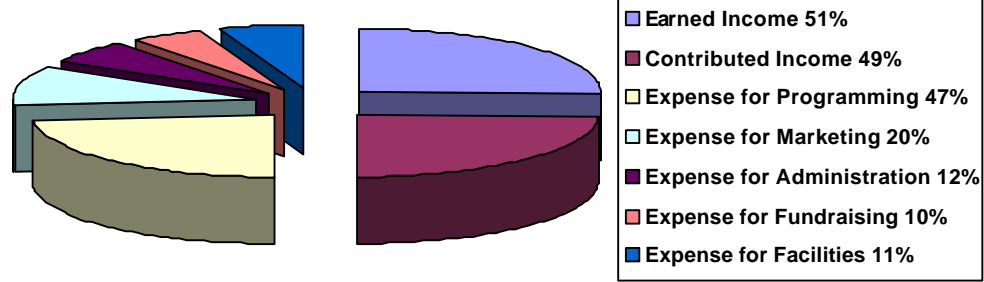
Facts about the Rep

San Jose Repertory Theatre is a non-profit professional theatre company.

Founded: 1980
 Artistic Director: Timothy Near
 Managing Director: Alexandra Urbanowski
 Board of Trustees President(2000-01 Season): Virginia L. Bowman

Annual Mainstage Attendance: 80,463
 Annual Attendance for Student Programs: 5,000
 Number of Subscribers (1998-99 Season): 13,449

Annual Budget (1999-00Season): \$5.4 million



Number of Main Stage Productions Annually (1999-00 Season): 6
 Number of Main Stage Performances Annually 1999-00 Season): 210

Performance , Box Office & Administrative Offices:
 San Jose Repertory Theatre
 101 Paseo de San Antonio
 San Jose CA 95113

Seating Capacity: 520

Profile of Main Stage Audience: Primarily 30-65 years of age, live throughout the greater South Bay Area, and come from all cultural and demographic areas.

Tax ID Number: 94-2638313

Global Footer

navigation

EDIT COPY

include staff list

Directions

- About the Rep
- Brief History
- Facts about the Rep
- Staff Bios**
- Board of Trustees
- Show History

Press Room

Email & Newsletter

Job Opportunities

Staff Biographies

Timothy Near (Artistic Director) is in her fourteenth season as Artistic Director. Her many directing credits at the Rep include *The Matchmaker*, *Legs*, *Knocking on the Door*, *The Lady's Not for Burning*, *Wallflowering*, *MISS JULIE*, *MIRANDOLINA*, *The Caretaker*, *The Baby Dance*, *The Little Foxes*, *The 1940's Radio Hour*, *Oedipus the King* and *The Sea Gull*.

She has acted and directed at numerous prestigious theaters, including The Guthrie Theatre, Berkeley Rep, La Jolla Playhouse, The Alliance Theatre in Atlanta, The Mark Taper Forum in L.A., Ford's Theatre in Washington, D.C., Repertory Theatre of St. Louis, Cincinnati Playhouse, The New York Shakespeare Festival and Stage West in Massachusetts. She has received Hollywood Dramalogue Awards for her direction of *Ghosts on Fire* at La Jolla Playhouse, *Fire in the Rain...Singer in the Storm* at the Mark Taper Forum and *Thunder Knocking on the Door*.

She is a native of Northern California and a graduate of San Francisco State University and the London Academy of Music and Dramatic Art.

Under Ms. Near's leadership, the Rep has produced four world premieres, three American premieres, eighteen West Coast premieres and created the New America Playwrights Festival at Villa Montalvo, now in its fourth year. She contributed significant leadership as well as artistic and technical guidance to the design and building of San Jose Rep's new state of the art theatre. Timothy is a recipient for the Woman of Achievement in the Arts award by the San Jose Mercury News and the The Women's Fund.

Alexandra Urbanowski (Managing Director) has been Managing Director of San Jose Rep since 1992. She leads the Rep in partnership with Artistic Director Timothy Near.

Under Ms. Urbanowski's guidance the Rep has eliminated a large accumulated deficit, established a permanent endowment fund, balanced its operating budget for eight consecutive years and increased attendance to over 100,000 annually.

Prior to become Managing Director she served as Business Manager and General Manager of the Rep, having joined the Rep staff in 1986. She is a member of American Leadership Forum Silicon Valley, San Jose Leadership Council, Rotary Club of San Jose, and the San Jose Arts Roundtable. On 1998 she was named one of the most influential women in the Bay Area non-profit world by the San Jose Business Journal. Ms. Urbanowski is a graduate of Smith College in Massachusetts and has been a resident of downtown San Jose since 1989.

John McCluggage (Associate Artistic Director) is in his twelfth season at the Rep. He has directed mainstage productions of *Over the Tavern*, *Communicating Doors*, *Mizlansky/Zilinsky*, *Old Wicked Songs*, *Laughter on the 23rd Floor*, *Sylvia*, *Blithe Spirit*, *Room Service*, *Redwood Curtain*, *The Innocents*, *Harvey*, *Hay Fever*, *The Glass Menagerie*, *Dracula* and *Pick Up Ax*, and has appeared on stage in *12th Night*, *Holiday*, *Caine Mutiny Court-Martial*, *The Sea Gull*, *Death of a Salesman*, *The Master Builder*, *The Little Foxes*, *The Geography of Luck* and *The Rainmaker*.

As director of the Rep's outreach programs, John founded and directs Red Ladder Theatre Company which uses improvisational theatre as a way of affording hundreds of San Jose youth and adults the opportunity to strengthen their imagination and express what they think and feel about their community and their lives.

Global Footer

navigation

Directions

About the Rep
Brief History
Facts about the Rep
Staff Bios
Board of Trustees
Show History

Press Room

Email & Newsletter

Job Opportunities

San Jose Repretory Theatre Board of Trustees

Virginia Bowman, President
Community Volunteer

David Heiman, Immediate Past President
Vice President of Investments, Smith Barney

John Michael Sobrato, VP for Long Range Planning
General Partner, Sobrato Development Companies

G. Jeffrey Moore, Vice-President for Nominating and Board Development
Managing Partner, Brandenburg, Staedler & Moore

Fred A. Snow, Vice-President for Development
Consultant, WholeTree.com

Greg Avis, Endowment Campaign Committee Chair
Managing Partner, Summit Partners

Gillian Moran, Artistic Advocacy & Education Chair
Community Volunteer

Nora Mason, Vice President for Audience Development
Director of Human Resources, Alta Vista

Nadine Priestley, Treasurer
Business Development Manager, Sun Microsystems

John Colwell, Secretary
Retired Surgeon

Jay M. Ross, Board Counsel
Partner, Hopkins & Carley

Lisa Blasé, Account Executive, Agile Software

Ken Briggs, Vice President of Human Resources,
Hitachi Data Systems

Robert Caret, President, San Jose State University

Robert Douglas, President, Magpie Internet

Jeannie Duisenberg, Dir. of Communications,
Lockheed Martin

Tim Harris, Vice President-Administration, Adaptec

R. William Highlander, Dir. of Public Relations, Calpine

Sarita Johnson Frederick, Physician

Elaine Knoerschild, Community Volunteer

Jennifer Konecny-Costa, Sr. Vice President, Novell
Inc.

Lata Krishnan, Founder, Smart Modular Technologies

Claudia Mann, Owner, Maid's Quarters

Mary Kay Marvin, Community Volunteer

Clayton Moraga, Silicon Valley Business Ink

David Moreland, President, CMG Consulting

Margaret Ecker Nanda, Attorney at Law, InfoGain
Corp.

Joan Perry, President, Take Charge Financial!

Warren Raisch, Senior Vice President of Digital
Strategies, Digitas

Steve Rossi, VP of Operations, Knight Ridder

Carol Sands, Managing Member, The Angels' Forum,
LLC.

Beverly Shelton, Sr. Vice President, Comerica Bank

Jennifer Sims, Director of Public Relations, Aspect
Telecommunications

Roger A. Smith, Consultant, Silicon Magic

Anthony J. Trepel, Attorney at Law, Trepel & Clark

Michael F. Williams, President, West Valley Staffing
Group

Jeri Waxman, Dir. of Marketing and Circulation, Silicon
Valley Business Ink

Jamie Williams, Media and Entertainment
Entrepreneur

Elliot Yasnovsky, Senior Producer/Internet Marketing,
Yahoo! Inc.

Global Footer

Directions

[About the Rep](#)
[Brief History](#)
[Facts about the Rep](#)
[Staff Bios](#)
[Board of Trustees](#)
[Show History](#)

[Press Room](#)

[Email & Newsletter](#)

[Job Opportunities](#)

Show History

1999-2000 (20th Season)

Over the Tavern - Tom Dudzick
 Desire Under the Elms - Eugene O'Neill
 The Matchmaker - Thornton Wilder
 Sons of Don Juan - John PiRoman
 Love in the Title - Hugh Leonard (American Premiere)
 Having Our Say: The Delany Sisters' First 100 Years - Emily Mann, Sarah Delany, A. Elizabeth Delany,
 Amy Hill Hearth
 1998-99 (19th Season)

Mizlansky/Zilinsky or "schmucks" - Jon Robin Baitz
 Three Days of Rain - Richard Greenberg
 12th Night, or "what you will" - William Shakespeare
 Legacy - Jon Marans, Ronnie Gilbert, Jeffrey Langley, Henry Mollicone, Studs Terkel (World Premiere)
 Sisters Matsumoto - Philip Kan Gotanda (World Premiere)
 Communicating Doors - Alan Ayckbourn
 1997-98 (18th Season)

Nixon's Nixon - Russell Lees
 Thunder Knocking on the Door - Keith Glover (Premiere Score)
 The Game of Love & Chance - Marivaux, Stephen Wadsworth
 Old Wicked Songs - Jon Marans
 Icarus - Edwin Sanchez
 COLE - Cole Porter, Alan Strachan, Benny Green
 1996-97 (17th Season)

The Caine Mutiny Court-Martial - Herman Wouk
 Holiday - Philip Barry
 Wallflowering - Peta Murray (American Premiere)
 Anna Christie - Eugene O'Neill
 Laughter on the 23rd Floor - Neil Simon
 The Lady's Not for Burning - Christopher Fry
 1995-96 (16th Season)

Blithe Spirit - Noel Coward
 La Posada Magica - Octavio Solis, Marcos Loya
 Mirandolina - Carlo Goldoni, Stephen Wadsworth
 The Sisters Rosensweig - Wendy Wasserstein
 Miss Julie - August Strindberg, Emily Mann
 Sylvia - A. R. Gurney
 1994-95 (15th Season)

Toys in the Attic - Lillian Hellman
 The 1940's Radio Hour - Walton Jones
 Redwood Curtain - Lanford Wilson
 The Elephant Man - Bernard Pomerance
 Sleuth - Anthony Shaffer
 Later Life - A. R. Gurney
 1993-94 (14th Season)

Death of a Salesman - Arthur Miller
 Room Service - John Murray, Allen Boretz
 Lonely Planet - Steven Dietz
 On the Verge (or The Geography of Yearning) - Eric Overmyer
 The Sea Gull - Anton Chekhov, Nicholas Saunders, Frand Dwyer
 Beehive: The 60's Musical - Larry Gallagher
 1992-93 (13th Season)

Woody Guthrie's American Song - Woody Guthrie, Peter Glazer
 Harvey - Mary Chase
 The Baby Dance - Jane Anderson
 The Innocents - Henry James, William Archibald
 Rumors - Neil Simon
 Banjo Dancing - Stephen Wade
 1991-92 (12th Season)

The Little Foxes - Lillian Hellman
 The 1940's Radio Hour - Walton Jones
 My Visits with MGM (My Grandmother Marta) - Edit Villarreal (World Premiere)
 Hay Fever - Noel Coward
 The Master Builder - Henrik Ibsen, Jerry Turner
 COLE! In the Still of the Night - Cole Porter, Alan Strachan, Benny Green
 1990-91 (11th Season)

Oedipus the King - Sophocles, Stephen Berg, Diskin Clay
 Closer Than Ever - Richard Maltby Jr., David Shire
 The Glass Menagerie - Tennessee Williams
 Pick Up Ax - Anthony Clarvoe
 Fire in the Rain...Singer in the Storm - Holly Near (World Premiere)
 The Mousetrap - Agatha Christie
 1989-90 (10th Season)

Fences - August Wilson
 A Day in Hollywood/A Night in the Ukraine - Dick Vosburgh, Frank Lazarus
 The Caretaker - Harold Pinter
 Dracula - Bram Stoker, John Balderston, Hamilton Deane
 The School for Wives - Moliere, Richard Wilbur
 The Geography of Luck - Marlane Meyer
 1988-89 (9th Season)

Arms and the Man - George Bernard Shaw
 The 1940's Radio Hour - Walton Jones
 Benefactors - Michael Frayn
 Talley's Folly - Lanford Wilson
 Burning Patience - Antonio Skarmeta
 A Streetcar Named Desire - Tennessee Williams
 1987-88 (8th Season)

navigation

EDIT COPY

Directions

About the Rep

Press Room

Press Releases

Image Gallery

Performances Calendar

Email & Newsletter

Job Opportunities

Press Room

Welcome to the Rep's PRESS ROOM. Read about all the exciting things which are happening at The Rep, from new productions to community outreach.

For more information regarding Press, Media, and Public Relations please contact:
Leslie Farrell, Media Relations Manager, 408-367-7282 or leslief@sjrep.com.

Global Footer

navigation

Directions

About the Rep

Press Room

Press Releases

Image Gallery

Performances Calendar

Email & Newsletter

Job Opportunities

Press Releases

[San Jose Repertory Theatre Presents Sandra Tsing Loh In Aliens In America \(1/15/01\)](#)

[Red Ladder Theatre Receives \\$43 Thousand California Arts Council Grant \(1/15/01\)](#)

[San Jose Repertory Theatre Presents the Bay Area premiere of Enter the Guardsman \(11/13/00\)](#)

[By The Bog Of Cats Rescheduled to Open 2001/02 Season; August Wilson's The Piano Lesson to Play for Spring 2001 \(11/13/00\)](#)

[San Jose Repertory Theatre Presents Amy's View by David Hare \(10/9/00\)](#)

[San Jose Repertory Theatre Presents Side Man by Warren Leight \(8/21/00\)](#)

[Fourth Annual Silicon Valley Wine Auction a Success \(7/26/00\)](#)

[Red Ladder Theatre Company Expands Its Reach Into The Community \(4/17/00\)](#)

[San Jose Repertory Theatre and The Abbey Theatre of Dublin Receive Prestigious Spirit of Ireland Award \(3/13/00\)](#)

For more information please contact:
Leslie Farrell, Media Relations Manager, 408-367-7282 or leslief@sjrep.com.

Global Footer

- Directions
- About the Rep
- Press Room
- Press Releases
- Image Gallery**
- Performances Calendar
- Email & Newsletter
- Job Opportunities

Image Gallery

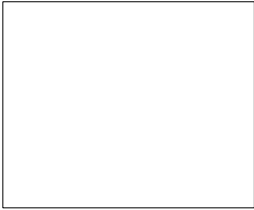
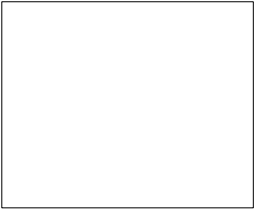
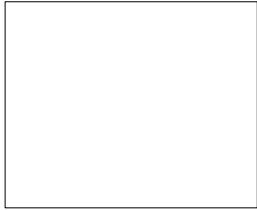
These images are freely available for press, personal, or not-for-profit use. Unauthorized alteration, sale, reproduction or commercial use of these images is strictly prohibited.

All images shall be accompanied by the following copyright statement:

©San Jose Repertory Theatre, 2000

For more information regarding Press, Media, and Public Relations please contact:
Leslie Farrell, Media Relations Manager, 408-367-7282 or leslief@sjrep.com.

<Play Title>

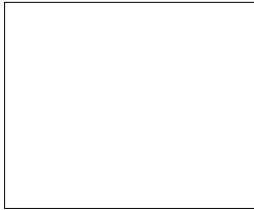
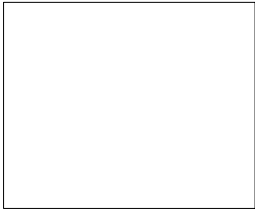
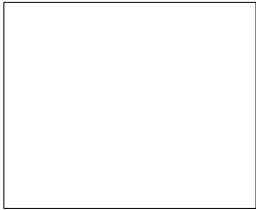


Caption

Caption

Caption

<Play Title>

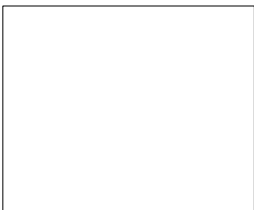


Caption

Caption

Caption

Theatre Photos



Caption

Caption

Caption

navigation

does not exist yet

- Directions
- About the Rep
- Press Room
 - Press Releases
 - Image Gallery
 - Performances Calendar
- Email & Newsletter**
- Job Opportunities

Email & Newsletter

Some blurb about the Email

Newsletter

Take a Virtual Tour

Global Footer

navigation

EDIT COPY

Directions

About the Rep

Press Room

Email & Newsletter

Job Opportunities

Full-Time Employment

Volunteers

Job Opportunities

Be a part of the excitement -- be a part of San Jose Rep! We have a wide range of positions available, both full- and part-time and volunteer.

San Jose Repertory Theatre is an Equal Opportunity Employer with a strong commitment to diversity.

San Jose Rep strives to employ a professional staff and a volunteer Board of Trustees that is representative of the community it serves. Effort to reach all audiences and cultivate a diverse staff, volunteer pool and Board of Trustees are priorities at San Jose Rep.

For more information or to inquire further about opportunities at San Jose Rep, please [e-mail info@sjrep.com](mailto:info@sjrep.com).

Global Footer

EDIT COPY

- Directions
- About the Rep
- Press Room
- Email & Newsletter
- Job Opportunities
 - Full-Time Employment**
 - Professional Services
 - Playwright Submissions
 - Actor Auditions
 - Volunteers

Full-Time Employment

Marketing Associate
 San Jose Repertory Theatre is seeking an experienced, creative Marketing Associate. Working with the Director of Marketing, the Marketing Associate assists with the strategic planning, design and execution of all marketing campaigns. Specific day-to-day responsibilities include developing and implementing single ticket, group sales, special event and online marketing (which may include designing and executing specific campaigns, media purchases and coordination collateral materials). With the Director of Marketing, the Marketing Associate is the liaison with the subscription manager, box office manager, inside sales supervisor, and educational coordinator.

This position requires an undergraduate degree. Experience in sales or marketing with an emphasis in the arts is preferably. This position also requires good interpersonal and computer skills. A familiarity with web marketing, computer ticketing and database systems desired. This full-time position is available immediately. Salary based on experience. Includes benefits.

Butch Coyne, Director of Marketing
 Fax: 408.367.7237
 Email: buthc@sjrep.com

Development Assistant
 The Rep is currently seeking an executive assistant reporting to the Director of Development. Part-time, with possibility of expansion to full-time. Available immediately.

Qualifications: College degree. Minimum 2 years' work experience in a professional environment. Superior written and verbal communication skills. Excellent word processing and spreadsheet skills. Strong initiative; ability to work independently with efficiency and accuracy. Excellent organizational skills. Ability to multi-task, set priorities, and complete projects in a timely, efficient manner. Knowledge of Microsoft Word, Excel.

Send résumé, cover letter and references to:

Alyssa Byrkit, Director of Development
 FAX: 408.367.7237.

Bookkeeper
 San Jose Repertory Theatre is searching for a part-time BOOKKEEPER who will support the Business Manager with the bookkeeping functions of the theatre. The position will assist in managing accounts payable, adjusting journal entries, bank reconciliation, personnel filing and year-end audit and tax preparation.

Qualifications:

Detail oriented person
 Working knowledge of Microsoft Excel and Microsoft Word
 Familiarity with generally accepted accounting principals and the fiscal side of theatre management
 Experience with accounting software-Great Plains preferred
 Experience in non-profit theatre
 Please send résumé to:

Jennifer Schwartz
 Business Manager
 e-mail: jennifers@sjrep.com
 NO PHONE CALLS PLEASE

Gift Store Sales Associate/Receptionist
 Curtain Call at the Rep. San Jose Repertory Theatre's Gift Store, is seeking a part-time Sales Associate/Receptionist. This 20 hour per week position may include some evenings and weekends, but schedule can be flexible. Associate will perform all aspects of retail sales in gift store as well as greeting and welcoming visitors and callers to the theatre.

Call or send résumé to :

Theresa Albers
 Curtain Call at the Rep
 Voice: 408.367.7201
 FAX: 408.367.7237.

Concessions Associates
 San Jose Repertory Theatre is seeking part-time, hourly associates to work bar, beverage and food concession at the theatre. Must be 21 or older and available evenings and weekends.

Ruth Mikusko, Systems & Office Manager
 Office: 408.367.7285
 Fax: 408.367.7237
 Email: ruthm@sjrep.com

Arts Promotion
 The Inside Sales Force at San Jose Repertory Theatre, Silicon Valley's Finest Professional Theatre Company, is looking for theatre lovers who are outgoing, positive and articulate to help us pack the house for our fabulous season.

If part-time work at full-time pay sounds good and you are available Sunday through Thursday 5 - 9 p.m., contact:

Sandra Steinkamp
 Office: 408.367.7232
 Fax: 408.367.7237
 Email: sandras@sjrep.com
 *** Free tickets to shows !!! ***

navigation

EDIT COPY

Directions

About the Rep

Press Room

Email & Newsletter

Job Opportunities

Full-Time Employment

Professional Services

Playwright

Submissions

Actor Auditions

Volunteers

Playwright Submission

San Jose Rep produces six plays per year - a mix of classics and contemporary works. In the past four years, the Rep has produced three world premieres, two American premieres and a premiere score.

Most of our new works begin in the New America Playwrights Festival (which is currently focused on mid-career playwrights) and is developed further with intention toward production on our mainstage. We have an interest in ethnic plays, plays by women and plays with music.

San Jose Rep is unable to accept unsolicited scripts for consideration. If you feel your work falls into the above guidelines and wish to have a script solicited, send a query letter with a synopsis and 10 sample pages of your script to:

Nakissa Etemad, Literary Manager/Dramaturg
San Jose Repertory Theatre
101 Paseo de San Antonio
San Jose, CA 95113

Please note: All submissions require 3-6 months response time. Thank you for your patience and support

Global Footer

navigation

EDIT COPY

Directions

About the Rep

Press Room

Email & Newsletter

Job Opportunities

Full-Time Employment

Professional Services

Playwright Submissions

Actor Auditions

Volunteers

Actor Auditions

The 2000/2001 season includes: Side Man by Warren Leight, Amy's View by David Hare, Enter the Guardsman with book by Scott Wentworth - music by Craig Bohmler - lyrics by Marion Adler, By the Bog of Cats by Marina Carr, Cyrano adapted by Frank Langella from Edmond Rostand's Cyrano de Bergerac, the Red Ladder Theatre Company and the New America Playwrights Festival. Equity LORT C contract.

Season general auditions are held in June. Watch for our ad in the Callboard magazine, BackStage West and on the local Equity hotline. We encourage everyone to attend these auditions. Callbacks for specific shows are by invitation only.

You may submit a photo/resume at any time during the year to:

Bruce Elsperger, Casting Director
San Jose Repertory Theatre
101 Paseo de San Antonio
San Jose, CA 95113

If you are cast in a production in the Bay Area, don't hesitate to send Mr. Elsperger a flyer so that he can come to see your work.

Global Footer

navigation

NEW COPY

Directions

About the Rep

Press Room

Email & Newsletter

Job Opportunities

Full-Time Employment

Volunteers

Business Services

Theatre Services

Volunteers Wanted

There are many ways to be involved with San Jose Rep, from helping on the front lines, to behind the scene work. Below are a sample of the various opportunities you can take advantage of to enrich your theatre going experience.

<general contact info>

Global Footer

navigation

EDIT COPY

- Directions
- About the Rep
- Press Room
- Email & Newsletter
- Job Opportunities
- Full-Time Employment
- Volunteers
- Business Services**
- Theatre Services

Business Services Volunteers

Production Interns

San Jose Repertory Theatre occasionally has production internships available. The San Jose Rep runs a six show season producing from August through June.

Interested applicants should submit applications indicating their experience and area of interest to:

Drayton Foltz
Production Manager
San Jose Repertory Theatre
101 Paseo de San Antonio
San Jose, CA 95129
Office: 408.367.7265 Fax: 408.367.7237
Email: draytonf@sjrep.com

Volunteer Gift Shop Associates

Help ring up sales at Curtain Call at The Rep, the new theatrical gift shop that is part of the new Rep Theater. It features an extensive collection of theatrical books, greeting cards and stationery as well as unique jewelry, educational children toys, decorative gifts. The store is open Tue-Sun as well as before performances.

Volunteer Graphic Artist and Designer

Assist the Repertory Theatre's gift shop, Curtain Call at the Rep, in creating and designing display ads, coupons and brochures. Must have excellent graphic and word processing skills. Strong initiative; ability to work independently with efficiency and accuracy. Excellent organizational skills. Detail-oriented.

Volunteer Public Relations Writer

Assist the Repertory Theatre's gift shop, Curtain Call at the Rep, in writing press releases and short feature articles for publication in our newsletters and programs. Would also submit writings to other publications and newspapers. Must have excellent word processing skills. Strong initiative; ability to work independently with efficiency and accuracy. Excellent organizational skills. Detail-oriented.

Please contact:

Theresa Albers
Store Manager
San Jose Repertory Theatre
101 Paseo de San Antonio
San Jose, CA 95113
Office:408.367.7201 Fax:408.367.7237

Global Footer

navigation

EDIT COPY

Directions

About the Rep

Press Room

Email & Newsletter

Job Opportunities

Full-Time Employment

Volunteers

Business Services

Theatre Services

Theatre Services Volunteer

There are many ways to be involved with San Jose Rep, from helping on the front lines, to behind the scene work. Below are a sample of the various opportunities you can take advantage of to enrich your theatre going experience.

If these volunteer positions interests you, please e-mail volunteer@sjrep.com with your name, address and phone number or call the Volunteer Line at 408.367.7275.

Volunteer Ushers

See every show in the season for free by volunteering as an usher. Requirements: Wear black on the bottom and on top. Arrive one hour prior to show time to help prepare the theater for audiences. Usher duties include: stuffing and handing out programs, seating patrons, taking tickets at the door, guarding for food and drink at the theater doors, working the coat check, picking up following the performance and/or working the concessions. Ushers are then invited to take any open seat at show time. Usher scheduling is done on a first to call, first to get the date of choice basis.

"Ten out of Twelve" Dinners

Bring a main-dish and a dessert or salad to share at this potluck meal provided for our actors and crew one evening during tech-week. This is a chance to have dinner with our star performers and the behind-the-scenes personnel and to show support for the upcoming production.

Creative Playshop Assistants

Explore the imagination with students ages 5 to 12 in our rehearsal hall during selected Saturday matinees this season. Assistants will work along side Rep theatre professionals.

Party Assistant

Our building has become a popular spot for events and celebrations but we can't manage large groups of people alone. If you enjoy the set-up, break-down and participation in a party please sign-up! (Rep sponsored events might be held off site but directions are provided.)

Global Footer

navigation

ASIS

Space Rental

Curtain Call Gift Store

Online Bookstore

Curtain Call Gift Store

Curtain Call, the Rep's gift store, specializes in gifts for creative living: greeting cards, art objects and collectibles, fine jewelry, rhythm instruments, a wide range of books on art, theatre, music, food and fun, educational toys and gifts for children. All proceeds benefit the programs and productions of San Jose Repertory Theatre.

Gift Store Hours

Mon. - Fri., 9a.m. to 6 p.m.;
Sat. & Sun., 1 p.m. to 5 p.m.

Open one hour before performances and during the first intermission for theatre patrons.

Located at the 3rd Street entrance of the theatre at 101 Paseo de San Antonio in downtown San Jose.
Phone: 408.367.7200.

Global Footer

navigation

ASIS

Space Rental

Curtain Call Gift Store

Bookstore

Bookstore

San Jose Rep has teamed with barnesandnoble.com, the world's largest bookseller, to offer you the shopping convenience and selection of an online bookstore and a way to support the Rep. The theatre receives a percentage of all sales at barnesandnoble.com but only if you enter through the San Jose Rep website.

Many of the plays produced by San Jose Repertory Theatre are available from barnesandnoble.com at a special on-line discount price. Some newer plays are not yet published. When available, they will be listed here. Keep checking back for updates!

B&N Logo

Keyword



Search

Title: Amy's View, script

Author: David Hare

ISBN: 0571191797

Publisher: Faber & Faber, Inc.

Date Published: August 1997

Rep Performance Date: Oct 28-Nov 26, 2000

1979. Esme Allen is a well-known West End actress at just the moment when the West End is ceasing to offer actors a regular way of life. The visit of her young daughter, Amy, with a new boyfriend sets in train a series of events which only find their shape sixteen years later. David Hare's new play, which mixes love, death and the theatre in a heady and original way, was sold out at the National Theatre, and transferred to the West End in January 1998. Presented on Broadway in the spring of 1999 with Dame Judi Dench in the pivotal role.

Global Footer

navigation

- Supporting the Rep**
- Make a Donation
 - More Donor Information
 - Corporate Sponsorship
 - Special Fundraising Events

Supporting the Rep

As a nonprofit theatre company, the Rep relies on charitable contributions for 50% of our total income. The Rep is a 501(c)(3) corporation, which means your donation is fully tax-deductible as allowed by law.

Large or small, your gift makes a difference.

[Make a Donation](#)

[Corporate Sponsorship](#)

[Special Fundraising Events](#)

[Donate Online](#)

Global Footer

navigation

Online Donation Form

[More details about making a donation.](#)

* Required field for online orders.

* Name: example: *John Smith*

* Address:

* City:

State:

* ZIP:

* Day Phone:

Evening Phone:

* Email Address:

I am mailing a check payable to **San Jose Repertory Theatre**.

Please charge my donation on my credit card.

Gift Amount: \$

Visa / Mastercard Discover American Express

Cardholder's Name:

Expiration Date: 01 2001

Matching Gifts

Employer to match:

I will send a Matching Gift Form.

Please contact me about Matching Gifts.

Please list my acknowledgement in the program as:

Please contact me about making a Legacy Gift to the Rep through my will or estate plan.

Submit

Cancel

Thank You

[More details about making a donation.](#)

If you prefer not to make your donation online, print out this form and mail or fax it to:

San Jose Repertory Theatre
Development Office
101 Paseo de San Antonio
San Jose, CA 95113

Fax: 408-367-7237

Questions? Call the Development Office at 408-367-7259 or email us at donate@sjrep.com.

Global Footer

navigation

Support the Rep

Make a Donation

More Donor Information

Donation Benefits

More Ways to Make a Gift

Legacy Gifts

Timothy's Wish List

Where the Money Goes

Contact Us

Corporate Sponsorship

Special Fundraising Events

Donate Online

Donation Benefits

Why make a gift to the Rep? We offer ten good reasons:

- 1.) We need you! The Rep relies on charitable support for 50% of our operating income. Without it, we simply wouldn't be here.
- 2.) It's easy -- your gift can be made in seconds through our online form.
- 3.) It's tax-deductible. The Rep is a 501 (c)(3) nonprofit organization, which means your gift is fully tax-deductible as allowed by law.
- 4.) It feels good. Your philanthropy makes art happen!
- 5.) It's more than the plays. Your gift not only supports our award-winning stage production, it also goes toward our comprehensive education and outreach program.
- 6.) Opportunity! Donors to the Rep receive exclusive opportunities to meet artists, get invitations to private events, sneak previews and backstage tours, as well as the chance to know other theatre-lovers.
- 7.) It shows your support. Did you love the last play you saw? There's no better way to show your approval than by making a donation.
- 8.) It's a good investment. The Rep is one of the best-managed arts organizations in the Bay Area -- your dollars will be well spent.
- 9.) Quality of life. Silicon Valley deserves the best in the arts -- your gift makes that happen.
- 10.) You're making the world a better place. One of the best indicators of a civilized society is the development of its arts and cultural life. Think Athens, Florence, Rome -- San Jose!

Mail your tax-deductible gift to:

San Jose Repertory Theatre
Development Office
101 Paseo de San Antonio
San Jose, CA 95113-2603

Global Footer

navigation

Support the Rep

Make a Donation

More Information

Donor Benefits

More Ways to Make a Gift

Legacy Gifts

Timothy's Wish List

Where the Money Goes

Contact Us

Corporate Sponsorship

Special Fundraising Events

Donate Online

Legacy Gifts

A deferred or legacy gift is one which you decide upon now and which provides for your favorite nonprofit program later. If you've ever wondered how to make a meaningful contribution to the Rep that will have a lasting impact, a legacy gift is one way to do it. At San José Rep, your generosity is deeply appreciated and we have some suggestions for your gift planning.

A Bequest in Your Will

This is a great way for friends and donors of the Rep to leave a legacy. Through your will, you can give a specific dollar amount, or you can assign a percentage of your estate. Your gift can be unrestricted or it can be designated for a specific use or program. We'll be glad to provide more information about your options.

A Life-Income Plan

Consider plans that allow you to set aside assets for the Rep to receive eventually – but in the meantime, provide for your income from the investment of those assets. Many of our donors like the immediate tax deduction this allows, plus the security of knowing they'll always have a reliable source of income. These plans let you "get something back" from your gift.

Beneficiary Designations

With life insurance policies and individual retirement plans, you can name who is to receive the proceeds at your death. Donating a life insurance policy can be a wonderful means of leveraging your gift. Naming the Rep as the beneficiary of your retirement funds after your death can also result in tremendous tax savings.

Legacy gifts are one of the most significant demonstrations of commitment to the community that an individual can make. If you would like to have direct involvement in the cultural enrichment of our community for generations to come, please consider a legacy gift.

For more details on how to arrange a gift through your will or estate plan, talk to your attorney or estate planner. For more information on legacy giving for the Rep, please contact Alyssa Byrkit at 408-367-7298.

Global Footer

navigation

Support the Rep

Make a Donation

More Donor Information

Donor Benefits

More Ways to Make a Gift

Legacy Gifts

Timothy's Wish List

Where the Money Goes

Contact Us

Corporate Sponsorship

Special Fundraising Events

Donate Online

Timothy's Wish List

Is there a piece of furniture in your house that needs a new home? Why not donate it to the Rep? We will even come pick up your second hand treasures for you so that all you have to do is make the call. And remember, your donation is tax-deductible for the market value of the item. If you are interested in donating any of the following items to our Artist Housing, please call Jil Hunter at 408-367-7234.

- Television (at least 19")
- Small Tables
- Bedding (Queen/King)
- Towels
- Kitchen Table & Chairs
- Dishware
- Kitchen Utensils
- Night Stand
- Lamps
- Camera in good condition (for Red Ladder Theatre Company)
- Dark Blue or Green Patio Furniture
- Answering Machines
- Coffee Table
- Bookshelf
- Telephones

As a nonprofit theater, our budget for office equipment and general supplies is extremely limited. If you or your company has a surplus of office supplies that can be donated, the Rep's box office, marketing, public relations, development and production staffs are in dire need of some of the following items:

- 20 desktop PC Pentium III or greater computers, with 4Gig disk drives and >100MB RAM
- 3 iMac computers
- eCommerce server for Internet ticket sales
- Credit card server for box office
- 2 Color network laser printers
- 3 network laser printers
- 2 color scanners
- 1 slide/film scanner
- 3 Zip or Jazz drives
- 1 digital camera
- DSL service for the company
- MS Project (for Mac and PC)
- 3 laptop Pentium computers

- Post-It notes
- Pens and pencils
- 3-ring binders
- Copy paper
- HP inkjet & laser toner cartridges
- Yellow writing pads
- Manila mailing envelopes (6x9, 9x12, 10x13)
- Scotch tape and tape dispensers
- Glue sticks
- White out
- Floppy disks
- Zip disks
- 3 Hole punches
- Staplers and staples

If you are interested in donating any of the above items, please call Ruth Mukusko at 408-367-7285. Remember, your contribution is tax-deductible and deeply appreciated!

Global Footer

navigation

Support the Rep

Make a Donation

More Donor Information
Donation Benefits
More Ways to Make a Gift
Legacy Gifts
Timothy's Wish List
Where the Money Goes
Contact Us

Corporate Sponsorship

Special Fundraising Events

Where the Money Goes

The Rep relies on charitable contributions for 50% of its total operating budget. Your tax-deductible donation ensures:

- The highest quality of theatre performance in the bay Area.
- The finest talent in American theatre actors, directors, designers and playwrights.
- The most affordable ticket price in Silicon Valley.
- The growth of the Red Ladder Theatre Company, the REp's nationally-acclaimed social outreach program.
- That over 6,000 South Bay schoolchildren can experience live theatre, often for the first time.
- The development of new plays and the nurturing of theatre artists of tomorrow.
- World premieres, new play commissions, and international collaborations, such as with the Abbey Theatre of Ireland.
- Maintenance of the Rep's magnificent home: the "jewel of downtown San Jose".

Donate Online

Global Footer

navigation

Support the Rep
Make a Donation
More Donor Information
Donation Benefits
More Ways to Make a Gift
Legacy Gifts
Timothy's Wish List
Where the Money Goes
Contact Us
Corporate Sponsorship
Special Fundraising Events

Contact Us

Need more information? Contact the Rep's Development Department any time.

San Jose Repretory Theatre
Development Department
101 Paseo de San Antonio
San Jose, CA 95113

donate@sjrep.com

Alyssa Byrikit, Director of Development
408-367-7298
alyssab@sjrep.com

Christine Landrum, Annual Fund Director
408-367-7264
christinel@sjrep.com

Chuck Foltz, Foundations and Grants Manager
408-367-7287
chuckf@sjrep.com

Sara Beth Newell, Events Coordinator
408-367-7293
sarabethn@sjrep.com

Bouree Grodeon, Development Coordinator
408-367-7259
boureeg@sjrep.com

Donate Online

Global Footer

- Support the Rep
- Make a Donation
- More Donor Information
- Corporate Sponsorship**
- Sponsor Benefits
- Testimonials
- List of Sponsors
- Contact Us
- Special Fundraising Events

Donate Online

Corporate Sponsorship

San Jose Rep's corporate sponsorships provide highly desirable and demographically appropriate visibility for Silicon Valley companies.

Opportunities for sponsorship include:

- Mainstage productions
- Ghostlight Forums
- Red Ladder Theatre Company
- Outreach
- Student Matinees
- Silicon Valley New Works Initiative
- New America Playwrights Festival
- Playrights Preview benefit fundraiser
- Opening Night Dinners
- Silicon Valley Wine Auction
- Corporate Council Breakfast

navigation

Support the Rep
Make a Donation
More Donor Information
Corporate Sponsorship
Sponsor Benefits
Testimonials
List of Sponsors
Contact Us
Special Fundraising Events

Sponsor Benefits

San José Rep's Corporate Sponsorship Packages range from \$5,000-\$100,000. These packages are carefully structured at each level to provide the maximum visibility possible, proportionate to the investment of corporate dollars. Benefits include:

- Client Entertainment and/or Cultivation
- Employee Reward
- Event Branding
- Press Exposure
- Visibility and Recognition at the Theatre
- Visibility from Mailings
- Many Additional Benefits

San José Rep understands that the dollars you spend have to bring maximum benefits to your company. Thus, we expend every effort with our corporate sponsors to ensure that our sponsorships work to the greatest possible mutual benefit. We are also happy to entertain any suggestions to tailor the package more precisely to your company's specific needs.

Donate Online

Global Footer

- Support the Rep
- Make a Donation
- More Donor Information
- Corporate Sponsorship
- Sponsor Benefits
- Testimonials**
- List of Sponsors
- Contact Us
- Special Fundraising Events

Donate Online

Testimonials

"Hewlett-Packard is proud to be a long-time corporate supporter of the San Jose Repertory Theatre. We strive to build bridges between the humanities and technology through our equipment giving to arts and culture organizations. HP is committed to giving back to the local community, and the Rep is one extraordinary vehicle in which to do so. We wish the Rep much continued success. Thank you for enhancing Silicon Valley's quality of life."

Carly Fiorina
President and CEO
Hewlett - Packard Compay

"Theatre mirrors to us what we are and what we are not. It compels us to look at ourselves and draws out of us both tears and laughter. In so doing, theatre enriches our souls and our culture. The San Jose Repertory does this for our community and Hopkins & Carley is very grateful that they are here. That is why we are happy to sponsor this year's Corporate Council Breakfast."

John F. Hopkins
President
Hopkins & Carley, a Law Corporation

"West Valley Staffing Group is proud to sponsor San Jose Repertory Theatre's Corporate Council Breakfast. As one of Northern California's largest private staffing organizations, we directly connected to both employers and employees in Silicon Valley. A strong employment environment is just one component of quality of life. Because of our strong connections with so many thousands of Silicon Valley residents, we are dedicated to supporting outstanding organizations such as the Rep that enrich the quality of life here."

Michael Williams
President and CEO
West Valley Staffing Group

"Sobrato Development Companies is proud to support San Jose Repertory Theatre. Sponsorship of live professional theatre is essential to vitality and quality of life of the Silicon Valley and provides our firm the opportunity to give back to the community in which we have built our business."

John Michale Sobrato and John Sobrato, Sr.
General Partners
Sobrato Development Companies

"Agile Software came into existence with energy, focus and a real customer solution in mind, and with the financial commitment of San Jose's Software Business Cluster. This year, Agile celebrates its fifth year in business. With important milestones just accomplished -- our recent successful IPO, and the addition of our 500th customer -- Agile Software takes pleasure in re-investing in the community that invested in us by contributing to the San Jose Repertory Theatre."

Bryan D. Stolle
Chairman and CEO
Agile Software Corporation

navigation

Support the Rep
Make a Donation
More Donor Information
Corporate Sponsorship
Sponsor Benefits
Testimonials
List of Sponsors
Contact Us
Special Fundraising Events

Our List of Current Sponsors

Be a community leader and join some of our current sponsors, which include:

AboveNet Communications: www.abovenet.com
Adapttec, Inc.: www.adapttec.com
AerLingus: www.aerlingus.ie
Agile Software: www.agilesoft.com
Air Systems Foundation, Inc.
Almaden Press, Inc.
Aspect Telecommunications: www.aspect.com
AT&T: www.att.com
The Business Journal: www.amcity.com/sanjose
Capitol Buick/Pontiac/GMC
Cisco Foundation: www.cisco.com/warp/public/750/fdn_home.html
Clarify, Inc: www.clarify.com
Ditech Communications Corporation: www.ditechcorp.com
Eulipia: www.eulipia.com
Hitachi Data Systems: www.hds.com
Hopkins & Carley: www.hopkinscarley.com
Lam Research Corporation: www.lamrc.com
Lockheed Martin: www.lmco.com
Novell, Inc.: www.novell.com
Pacific Bell: www.pacbell.com
Pacific Hotels: www.pacifichotels.com
Pepper Lane Properties
Perisho, Tombor, Loomis & Ramirez: www.ptlr.com
Pressure Vessel Services, Inc.
Quantum: www.quantum.com
San Jose Hilton & Towers: www.hilton.com/hotels/SJCSHHF
San Jose Mercury News: www.sjmercury.com
Tam Communications: www.tamcomm.com
United Defense LP: www.uniteddefense.com
Yamaha Peninsula Music Center

Donate Online

Global Footer

navigation

Special Fundraising Events

Support the Rep

Make a Donation

More Donor Information

Corporate Sponsorship

Special Fundraising Events

Event Image Gallery
Sponsor Opportunities
Contact Us

Upcoming Events

Opening Night Dinner for *Cyrano*

May 18, 2001

5:00pm

Join your friends for a perfect night of theatre: dinner at 71 St. Peter in downtown San Jose, followed by the Opening Night performance of *Cyrano*. Seating is extremely limited, so reserve your seats today! Dinner tickets are \$80, per person, and do not include performance tickets. Please call the box office for tickets to the performance.

Playwrights Preview

June 8, 2001

5:00pm

A brand new event to celebrate the recently-expanded New America Playwrights Festival (June 9-10, at the Rep). Join us as we launch the Festival in style, with a fabulous wine reception and dinner at the elegant Capital Club Athletics in downtown San Jose. The evening promises to be filled with fun, surprises, and the wisecracking Ms. Wendy Wasserstein, our keynote speaker. Tickets will sell out early for this event, so reserve yours today! \$125 per person if purchased before May 1.

Global Footer

navigation

NEW COPY

Red Ladder Theatre Co
New America Playwrights
Community Outreach
Acting Classes
For Students

Education & Outreach

Red Ladder Theatre Co

The Red Ladder Theatre Company is the social outreach branch of the San Jose Repertory Theatre. Formed in 1992, the Red Ladder Theatre Company exists to create an environment in which the members of our community are free to discover their own creativity and to explore the strength and beauty of their imaginations.

[More details>>](#)

Community Outreach

San Jose Repertory Theatre's "Get Into the Act" program provides thousands of Bay Area students educational enrichment through exciting, thought provoking, professional theatre each year. Teachers are invited to use one, all, or a combination of our programs to make the program work for you!

[More details>>](#)

New American Playwrights

The Fifth Annual New America Playwrights Festival, previously presented in collaboration with and on the grounds of Villa Montalvo, will move to San Jose Rep's theatre in downtown San Jose. Mark your calendars for the weekend of June 9th and 10th, 2001.

[More details>>](#)

For Students

<text>

Global Footer

navigation

ASIS

Education & Outreach

Red Ladder Theatre Co
Red Ladder Newsletter

New America Playwrights

Community Outreach

Acting Classes

For Students

Red Ladder Theatre Company

The Red Ladder Theatre Company combines performances based on themes of strong social issues with workshops that explore and celebrate the artistic process. By performing with rather than for our audiences, we are able to create an environment in which the participants are given the opportunity to discover their own creativity and learn to make healthy choices for their lives. Through improvisational theatre, Red Ladder is able to bolster the imaginations of our youth in a noncompetitive way. We validate their thoughts and feelings and help them learn to view themselves and their world more positively.

The Red Ladder Theatre Company consists of four actors and one musician, all of whom have a deep commitment as professional artists to impact positively on the lives of young people in our community. We are a bilingual (English/Spanish) and multiracial company. As such, we are able to relate to the myriad of issues faced by the youth in our diverse community.

Program Expansion

When Red Ladder was first formed, the focus was solely on elementary school age children. While that population remains the core of Red Ladder's work, the company has expanded to take on projects in a variety of other settings with a variety of populations, to great success. In past seasons we had expanded our program to include working with pregnant and parenting young women, youth incarcerated in Juvenile Hall, and adult men incarcerated at the Elmwood Correctional Facility. This season has seen continued expansion in these directions.

Significant Partnerships & Recognition

Red Ladder continues to rely upon partnerships with community agencies and social services organizations with whom we collaborate to bring programs to those most in need. We have continued our relationships with The City of San Jose's Project Crackdown, The Mexican American Community Services Agency, The Girl Scouts of Santa Clara County, San Jose City Year, Future Visions program at Lincoln High School, Santa Clara Public Health Department and Eastfield Ming Quong Foundation. In addition, we have expanded our relationships with The Santa Clara County Reading Program's Inmate Literacy Project and the Department of Corrections to include, in addition to the men at Elmwood, the women in the Correctional Center for Women and the youth in both Juvenile Hall and the Harold Holden Ranch of Boys. We have also forged new relationships with the San Jose History Museum and the National Service Learning Conference.

The Prusch Foundation once again provides us with a performance space in East San Jose, and The Community Foundation makes possible our work with the Correctional Center for Women. Program expansion has been made possible by the generous grants from The Valley Foundation and The David and Lucile Packard Foundation.

For more information, please contact Karen Piemme, Education Coordinator at (408) 367-7291 or karenp@sjrep.com.

Global Footer

navigation

ASIS

Education & Outreach

Red Ladder Theatre Co

New America Playwrights

Community Outreach

Acting Classes

For Students

New America Playwrights Festival

The Fifth Annual New America Playwrights Festival, previously presented in collaboration with and on the grounds of Villa Montalvo, will move to San Jose Rep's theatre in downtown San Jose. Mark your calendars for the weekend of June 9th and 10th, 2001.

Resident playwrights 2000: Donald Eldon Wescoat, Tommy Shepard, John Henry Redwood, Cherylene Lee, Dan Wolf (l-r)

The festival allows the Rep to explore relationships with playwrights whose work might develop into mainstage offerings, as with *Legacy* by Ronnie Gilbert (1998-99 Season), *Icarus* (1997-98 Season) by Edwin Sanchez and *Thunder Knocking on the Door* by Keith Glover (1997-98 Season). Most of the selected artists have already experienced a good measure of success. Others are up-and-coming talent, such as actors/playwrights Tommy Shepherd and Dan Wolf, whose works *Beatbox: a Raparetta* and *Is Life a Dream?* brought a hip hop flavor and a challenging new perspective to festivals in seasons past.

We are very excited at the prospect of the festival in our new theatre in 2001. Readings of three or four new plays will be presented in the rehearsal hall on the fourth floor and on the mainstage. We will be able to offer an exciting weekend of readings, panels, and receptions all focusing on the development of new work. The whole building will be vibrating with creativity.

Join us for a weekend of brave new plays in a festival atmosphere at the Rep! Stay tuned for more details.

Call the Rep Box office for Tickets and information at 408-367-7255.

For sponsorship information on the 6th annual New America Playwrights Festival, please contact Alyssa Byrkit at 408-367-7298 or alyssab@sjrep.com

Global Footer

navigation

NEW COPY

Education and Outreach

Red Ladder Theatre Co

New America Playwrights

Community Outreach

Senior Discounts

Community Nights

Ghostlight Forum

20/20 Insite

Post Play Discussion

Acting Classes

For Students

Senior Discounts

Seniors, as well as students, receive discounted subscriptions and single tickets. Seniors save approximately 25% on a regular subscriptions. Additionally, senior citizens are given \$3.00 off on every single ticket purchased.

Global Footer

navigation

NEW COPY

Education & Outreach

Red Ladder Theatre Co

New America Playwrights

Community Outreach

Senior Discounts

Community Nights

Ghostlight Forum

20/20 Insite

Post Play Discussion

Acting Classes

For Students

Community Nights

These programs open preview performances of most productions to members of the community who could not otherwise afford theatre. The corporate sponsors of our productions can direct the charitable focus of Community Night outreach to benefit particular groups or sponsors may open Community Night to the general population as a whole. For instance, a production's sponsor may reserve Community Night tickets for an organization in which the sponsor takes particular interest, such as Big Brothers/Big Sisters. A flat \$7.00 fee is charged to Community Night audience members.

Global Footer

NEW COPY

- Education & Outreach
- Red Ladder Theatre Co
- New America Playwrights
- Community Outreach
 - Senior Discounts
 - Community Nights
 - Ghostlight Forum**
 - 20/20 Insite
 - Post Play Discussion
- Acting Classes
- For Students

Ghostlight Forum

text

navigation

EDIT COPY

Education & Outreach

Red Ladder Theatre Co

New America Playwrights

Community Outreach

Senior Discounts

Community Nights

Ghostlight Forum

20/20 Insite

Post Play Discussion

Acting Classes

For Students

20/20 Insite

What if you could get all the insight, behind-the-scenes details and backstage buzz of a Rep production before you saw the play? Join Associate Artistic Director, John McCluggage for 20/20 Insite, a series of informative talks Wednesday evenings before your scheduled performances. Find out what to watch for in that evening's production: what makes Rep performances different from other theatres' interpretations or gain valuable insight into new works and Rep premieres. Here's how it works: 2 Wednesday evenings throughout the season, you are invited to join John and perhaps a surprise guest or two in the upstairs balcony at the theatre from 7-7:20 PM for an informal discussion. Then browse Curtain Call, the Rep gift shop, or enjoy a refreshment in our lobby before you see the show. Best of all...it's free. But space is limited to the first 60 people.

Just call the Rep box office at 408-367-7255 to RSVP by Sept 9, 2000 and we'll give you all the details, including your dates.

Global Footer

navigation

NEW COPY

Education & Outreach

Red Ladder Theatre Co

New America Playwrights

Community Outreach

Senior Discounts

Community Nights

Ghostlight Forum

20/20 Insite

Post Play Discussion

Acting Classes

For Students

Post-Play Discussion

Following Sunday and Saturday matinees, audiences have the opportunity to ask questions of the actors and discuss their particular points of interest.

Global Footer

navigation

EDIT COPY

Education & Outreach
Red Ladder Theatre Co
New America Playwrights
Community Outreach

Acting Classes

For Students

Acting Classes

This workshop is designed for adults seeking intermediate to advanced levels in training. It is lead by Billie Shepard, a brilliant coach with more than 20 years of acting and teaching experience. Billie guides the class with insight, sensitivity, energy, respect and clear communication that nurtures the creative best from the actor. Enhance your competitive edge and self-confidence while sharpening audition skills through scene and monologue work. Actors that have worked with her have found their success in the marketplace tremendously enhanced.

photo of Billie Shepard

New sessions begin on a monthly basis beginning the first Monday of each month. Cost: \$160/month. Call (408)367-7291 for sign-ups or information.

When: Mondays 6:30 - 9:30 p.m.

Where: San Jose Repertory Theatre, 101 Paseo de San Antonio, San Jose, between South 2nd & 3rd Streets.

Cost: \$160/mo Call (408) 367-7291 to register/info

Global Footer

navigation

EDIT COPY

Education & Outreach
Red Ladder Theatre Co
New America Playwrights
Community Outreach
Acting Classes
For Students

For Students

San Jose Repertory Theatre's "Get Into the Act" program provides thousands of Bay Area students educational enrichment through exciting, thought provoking, professional theatre each year. Teachers are invited to use one, all, or a combination of our programs to make the program work for you!

Student Matinee

Student groups of any size are welcome to attend our productions while enjoying our fantastic student rates of half off! The Rep presents Wednesday matinees at noon to accommodate school schedules. All pre booked groups are entitled to the following free services:

Complimentary Study Guides: These booklets provide background information on the play, as well as insight into its major themes.

Post Play Discussions: Following Sunday and Saturday matinees, audiences have the opportunity to ask questions of the actors and discuss their particular points of interest.

Student Tours: See how the magic is created behind the scenes. Tours are available after the production.

For more information about any of the "Get Into the Act" programs contact: Karen Piemme, Education Coordinator at (408) 367-7291.

Actor in School

An actor or designer visits your school to discuss the variety of talents contributing to the exciting world of theatre! Actors must be booked in advance and a negotiable fee is required. For more information, please contact: Karen Piemme, Education Coordinator at (408) 367-7291

Education Nights

Twice per season the Rep hosts a special evening for teachers, beginning with a pre-show reception hosted by our Education Programs Coordinator, followed by a spectacular production, and ending with a tour of the theatre.

Teachers receive an Educator's Discount Teachers receive complimentary chaperone tickets when bringing a student group.

Teacher Training Workshops: Educators learn how to integrate theatre techniques into the classroom, enhancing curriculum, while encouraging and facilitating creativity in their students.

Study Guides

Online guide provides background information on the play, as well as insight into its major themes.

Student Internships

Need text

Global Footer